

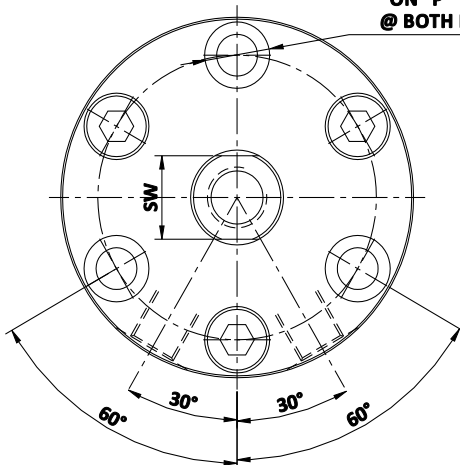


# Hydraulic Compact Cylinders

Double Acting



ØK thru  
C' Bore ØM x N deep,  
3 Nos EQUISPACED  
ON 'P' PCD  
@ BOTH FACES



**Description**

- This cylinders are double acting, solid piston cylinders and are very compact in the axial direction.

**Features**

- Type : Double Acting
- Min. working pressure : 5 kg/cm<sup>2</sup>
- Max. working pressure : 150 kg/cm<sup>2</sup>

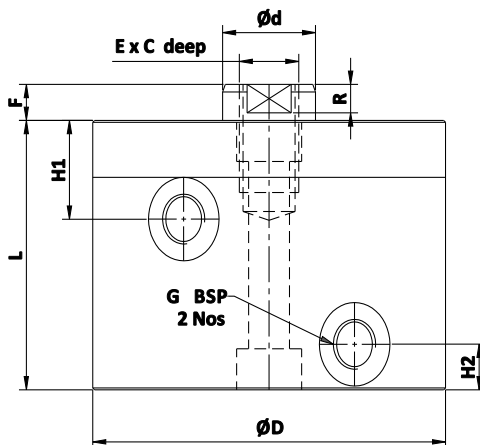
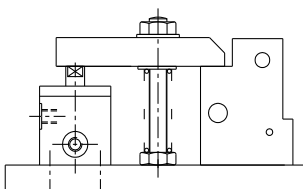
**Application**

- These are used where the height is a constraint. The simple mounting arrangement makes the cylinders very easy to use.

**Important Notes**

- Due to the compact design, port thread depth is short. Reduce the standard connector thread length to suit the port.
- For seal kits, add prefix SK to part no.

**Mounting Arrangement**



DIMENSIONAL DETAILS				
SIZE	1	3	4	5
E	M6	M10	M12	M16
C	10	18	20	25
F	5	5	6	6
d	12	16	20	25
D	45	65	76	95
G	1/8"	1/8"	1/4"	1/4"
SW	10	14	17	22
H1	15	17	22	26
H2	9	9	12	12
R	3.5	3.5	4	4
K	4.5	6.6	9	11
M	8	11	14	17.5
N	4.4	6.5	8.6	10.8
P	35	50	60	75

- All dimensions are in mm
- Overall dimensional tolerance ±0.5 mm

SPECIFICATIONS									
SIZE	BORE (mm)	STROKE (mm)	PUSH FORCE at 150 kg/cm <sup>2</sup> (kgf)	PULL FORCE at 150 kg/cm <sup>2</sup> (kgf)	OIL VOLUME PUSH (cc)	OIL VOLUME PULL (cc)	L (mm)	WEIGHT (kg)	STANDARD PART No's
1	20	10	470	300	3	2	36	0.6	4360-121
		25			8	5	51	0.6	4360-122
3	32	10	1200	900	8	6	42	1	4360-321
		25			20	15	57	1.5	4360-322
4	40	10	1900	1400	13	10	50	1.5	4360-421
		25			31	24	65	2	4360-422
5	50	10	2900	2200	20	15	56	2	4360-521
		25			49	37	71	3.5	4360-522