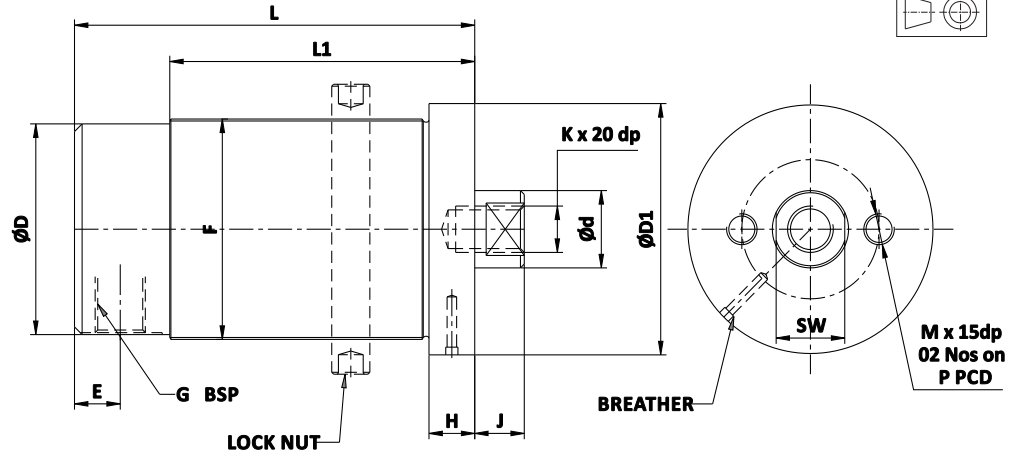




Hydraulic Threaded Body Cylinders

Single Acting, Spring Return



Description

- This is a compact, push type, single acting spring return cylinder where the threaded body allows for adjustable mounting. It also has fixed mounting holes at its base.

Features

- Type : Single Acting, Spring Return
- Min. working pressure : 10 kg/cm²
- Max. working pressure : 200 kg/cm²

Application

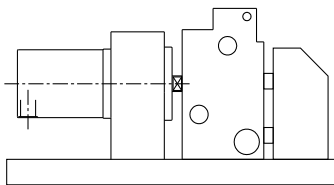
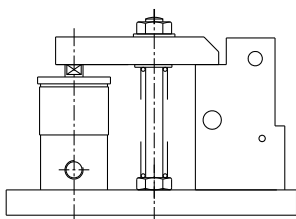
- These can be used for direct clamping as well as for positioning and support. The threaded body also makes the cylinder easy to install.

Important Notes

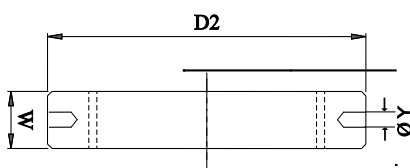
- Breather should be protected from cutting fluid and coolant.
- Heavy extensions to piston rod can influence return stroke of the cylinder.
- For seal kits, add prefix SK to part no.

- All dimensions are in mm
- Overall dimensional tolerance ±0.5 mm

Mounting Arrangement



LOCK NUT



SPECIFICATIONS							
SIZE	0	1	3	4	5	5	6
FORCE in kgf @ 200 kg/cm ²	300	500	1000	1800	3000	3000	5000
BORE DIA	16	20	32	40	50	50	63
D	21.8	27.5	43.5	54.5	67.5	67.5	83
d	10	12	16	20	25	25	36
D1	30	36	54	65	78	78	96
E	9	10	12	12	14	14	14
F	M24x2	M30x2	M46x2	M57x2	M70x2	M70x2	M86x2
G	1/8"	1/8"	1/4"	1/4"	3/8"	3/8"	3/8"
H	12	12	12	12	12	12	15
J	7	8	9	13	15	15	20
K	M6	M6	M10	M12	M16	M16	M16
M	-	M6	M6	M8	M10	M10	M12
P	-	20	30	36	48	48	56
SW	8	10	13	18	21	21	30
PART No.	4411-011	4411-111	4411-311	4411-411	4411-511	4411-513	4411-611
STROKE	15	10	10	10	10	50	25
L	78	70	72	77	81	160	110
L1	58	49	47	52	54	90	83
OIL VOL (cc)	3	3	7	13	20	100	84
WEIGHT kgs	0.25	0.5	1	1.5	2	3.5	4.8
PART No.	-	4411-112	4411-312	4411-412	4451-512	4411-514	4411-612
STROKE	-	25	25	25	25	100	50
L	-	98	102	105	110	260	160
L1	-	65	77	80	83	140	90
OIL VOL (cc)	-	8	18	31	50	200	166
WEIGHT kgs	-	0.7	1.25	2	3	5.2	6.5
LOCK NUT (ACCESSORIES)							
PART No.	4411-009	4411-109	4411-309	4411-409	4411-509	4411-509	4411-609
D2	36 HEX	46 HEX	Ø60	Ø75	Ø90	Ø90	Ø118
W	10	10	10	10	12	12	15
Y	6.5	6.5	6.5	6.5	8.5	8.5	10.5