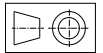




Hydraulic Hollow Piston Cylinders

Single Acting / Spring Return



Description

- This clamping device is a single acting, spring return, push type cylinder with a through hole in the piston rod.

Features

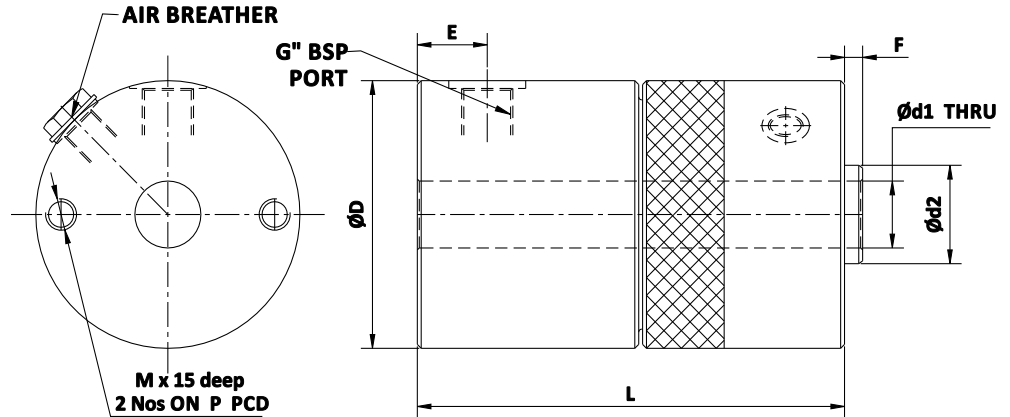
- Type: Single acting, spring return.
- Min. working pressure : 5 kg/cm²
- Max. working pressure : 210 kg/cm²

Advantages

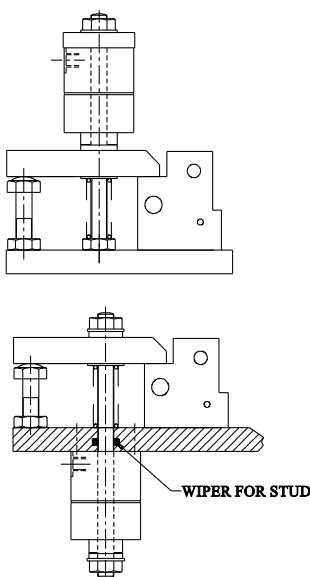
- The cylinder can be mounted on the existing fixtures by attaching it to or inserting it over the stud. The stud length may be increased as required. The mounting arrangement can be made as shown in the figures to achieve maximum clamping efficiency.

Important Notes

- Breather should be protected from cutting liquids and coolants.
- For seal kits, add prefix SK to part no.



Mounting Arrangement



- All dimensions are in mm
- Overall dimensional tolerance ±0.5 mm

SPECIFICATIONS

	1100	1300	2200	2200	3300	3300	5000	5000
FORCE in kgf @ 150 kg/cm ²	1100	1300	2200	2200	3300	3300	5000	5000
D	61	56	68	68	78	78	98	98
d1	13	13	17	17	21	21	25	25
d2	25	25	25	25	32	32	40	40
E	28	21	12	21	18	18	18	18
F	2	2	2	2	3	3	3	3
G	1/4"	1/4"	1/4"	1/4"	3/8"	3/8"	3/8"	3/8"
M	M6	M6	M8	M8	M10	M10	M10	M10
P	40	40	55	55	60	60	60	60
L	85	103	80	110	82	110	90	110
PART No.	4610-111	4610-211	4610-311	4610-312	4610-411	4610-412	4610-511	4610-512
STROKE	10	25	10	25	10	25	10	25
L	85	103	80	110	82	110	90	110
OIL VOL (cc)	7.5	22	15	37	22	55	34	85
Min. SPRING FORCE (kgf)	23	17	63	24	64	42	85	70
WEIGHT kgs	1.5	1.5	2	2.5	2.5	3	3.6	5
PART No.	-	4610-212	-	4610-313	-	4610-413	-	4610-513
STROKE	-	50	-	50	-	50	-	50
L	-	160	-	160	-	160	-	160
OIL VOL (cc)	-	44	-	74	-	110	-	72
Min. SPRING FORCE (kgf)	-	20	-	30	-	42	-	72
WEIGHT kgs	-	2.3	-	4	-	4.5	-	6.5