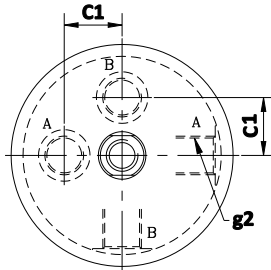
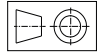




Hydraulic Universal Clamping Cylinders

Double Acting



Description

- This is strictly a push type cylinder, which can be easily installed and consists of a solid body held in position by a locking ring.

Features

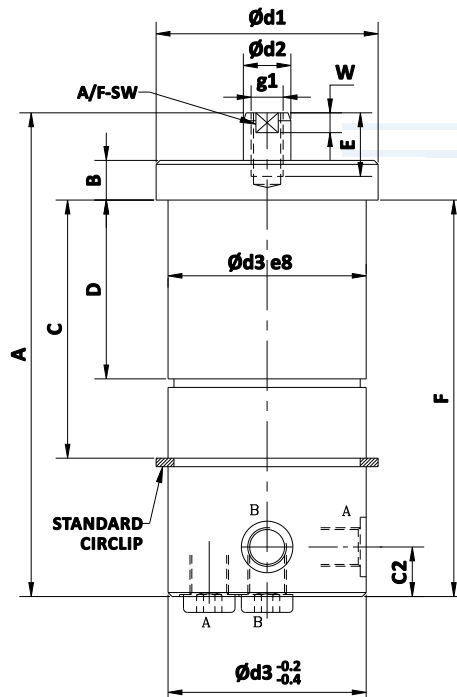
- Type : Double Acting
- Min. working pressure : 5 kg/cm²
- Max. working pressure: 210 kg/cm²

Application

- These can be used as lifting and clamping cylinders in machine and fixture building. It can be inserted into the smooth through hole and fixed at different levels by means of a locking ring.
- Installation position: Any

Important Notes

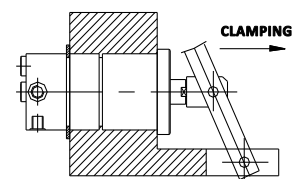
- The mounting dimensions on the matching component have to be strictly maintained.



DIMENSIONAL DETAILS					
SIZE	2	3	4	5	6
BORE DIA	25	32	40	50	63
ROD DIA d2	12	18	22	28	36
STROKE	32	40	50	64	64
A	122	133	147	167	186
B	10	10	12	12	15
C	65.1	70.1	80.1	80.1	100.1
D	45.1	45.1	50.1	50.1	60.1
E	12	16	18	20	20
F	100	110	120	136	150
C1	14.6	18	23	28	34
C2	12.5	12.5	10.5	10.5	13
d1	56	66	76	90	105
d3	50	58	68	80	95
g1	M8	M10	M12	M16	M20
g2	1/8"	1/4"	1/4"	1/4"	1/4"
SW	10	15	19	24	30
W	10	10	10	10	12

- All dimensions are in mm
- Overall dimensional tolerance ± 0.5 mm

APPLICATION EXAMPLE



SPECIFICATIONS						
SIZE	STROKE (mm)	PUSH FORCE at 200 kg/cm ² (kgf)	OIL VOLUME PUSH (cc)	OIL VOLUME PULL (cc)	WEIGHT (kg)	STANDARD PART No's
2	32	980	16	9.3	1.7	4710-221
3	40	1600	32	24	2.4	4710-321
4	50	2500	65	45	3.6	4710-421
5	64	3920	128	89.6	5.7	4710-521
6	64	6220	198.4	134.4	8.7	4710-621