



Hydraulic Intensifiers

Double Acting



Description

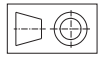
- A Hydraulic Intensifier is used to boost the low pressure output of a hydraulic power unit. The high pressure output of the intensifier is used in clamping devices.

Important Notes

- The system should be designed to avoid creation of vacuum in the lines.
- Air should be thoroughly bled (removed) from the system before operation and at regular intervals.

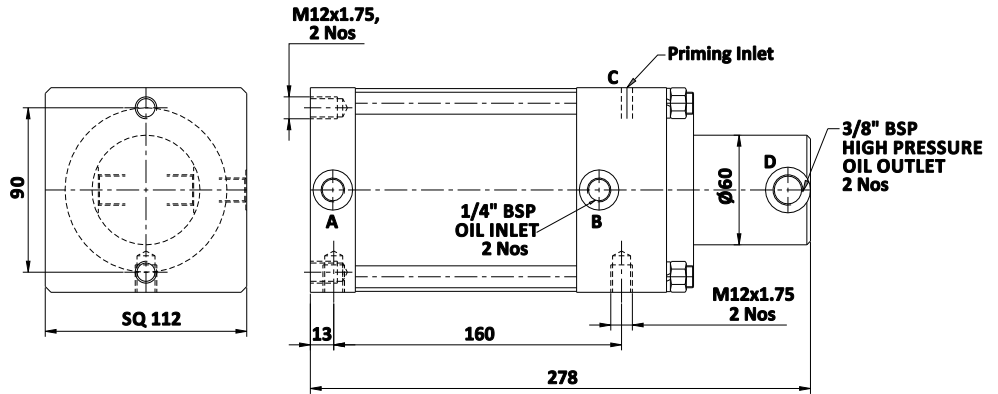
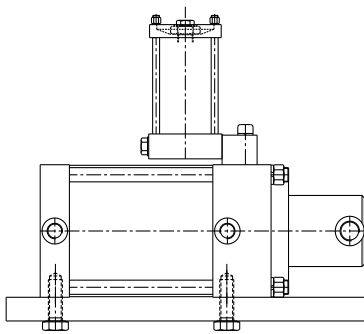
Features

- Type: Double Acting
- Max. Input pressure : 40 kg/cm²
- Intensification ratio : 1:5

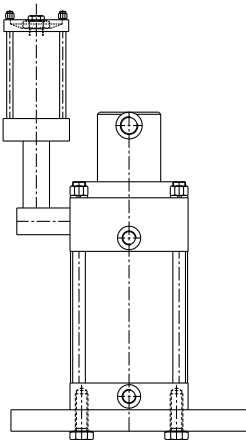


Mounting Arrangements

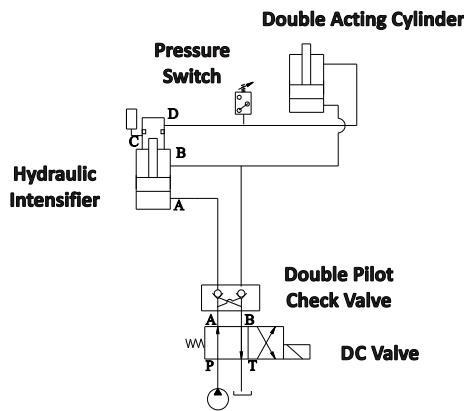
Horizontal Mounting



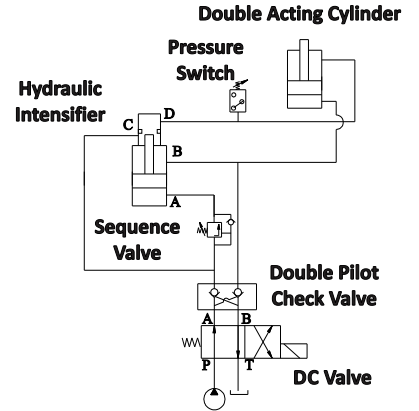
Vertical Mounting



Hydraulic Circuit-1
(Reqd. oil volume < Intensifier oil output)



Hydraulic Circuit-2
(Reqd. oil volume > Intensifier oil output)



SPECIFICATIONS

Sl.No.	MAX. INPUT PRESSURE (kg/cm ²)	INTENSIFICATION RATIO	OIL OUTPUT (cc)	WEIGHT (kg)	STANDARD PART No's
1	40	1:5	80	15	6210-100 (Horizontal Mounting with Reservoir)
2	40	1:5	80	15	6210-200 (Vertical Mounting with Reservoir)
3	40	1:5	80	15	6210-300 (Universal Mounting without Reservoir)

- All dimensions are in mm
- Overall dimensional tolerance ±0.5 mm