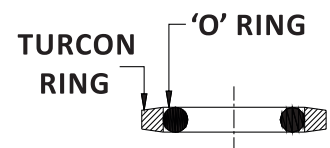


Installation Procedure for Piston Seal

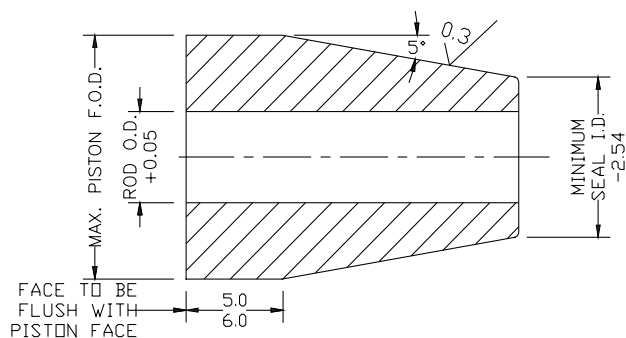


The following installation procedure is for piston seals. Installation tools, as per drawing, are recommended for one piece glands.

- Step 1: Clean and lubricate the cylinder parts, hardware & seals.
- Step 2: Place 'O' Ring (elastomer) into groove as per drawing. The 'O' Ring must be seated correctly without twisting.
- Step 3: Place the loading mandrel onto the piston.
- Step 4: Place Turcon seal ring on loading mandrel as per drawing.
- Step 5: Push Turcon seal ring up the loading mandrel and into the groove.
- Step 6: Remove the loading mandrel from the piston.
- Step 7: Push, while twisting, the resizing tool onto the seal assembly. Remove after a short duration.



Loading mandrel



Resizing tool

