



Hydraulic Pull Cylinders

Single / Double Acting



Description

- Pull cylinders, similar in size and construction to Swing Cylinders, ensure perfect alignment of internal component and maximum clamping rigidity.

Features

- Type : Single & Double Acting
- Min. working pressure : 5 kg/cm²
- Max. working pressure:200 kg/cm²

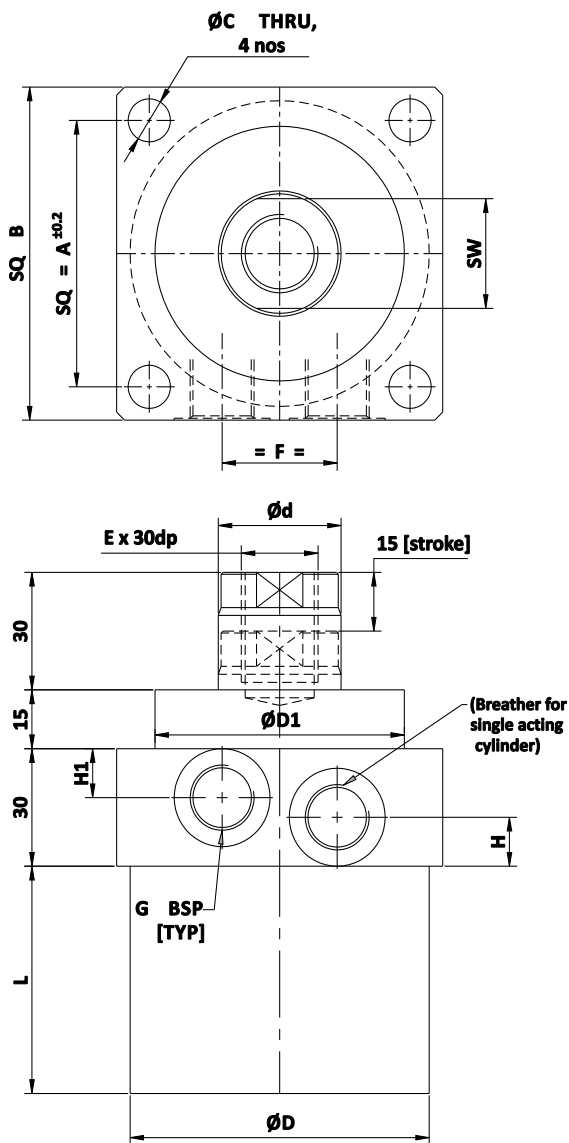
Application

- The simple arrangement ensures easy assembly for standard clamping applications.

Important Notes

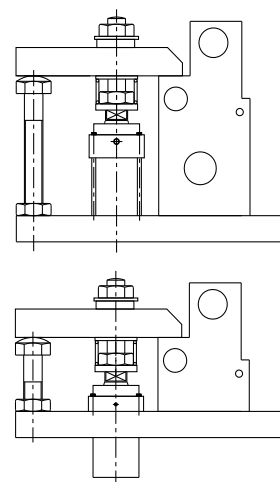
- For single acting cylinders breather should be protected from cutting liquids and coolant.
- For seal kits, add prefix SK to part no.

- All dimensions are in mm
- Overall dimensional tolerance ±0.5 mm



DIMENSIONAL DETAILS			
SIZE	4	5	6
A	45	55	68
B	60	67	85
C	7	9	11
D	52	62	78
D1	38	45	65
d	22	25	32
E	M12	M16	M20
F	21	22	30
G	1/4"	1/4"	3/8"
H	15	15	12.5
H1	10	10	12.5
L	50	50	58
SW	17	20	28

Mounting Arrangement



SPECIFICATIONS								
SIZE	BORE (mm)	STROKE (mm)	CLAMP FORCE at 200 kg/cm ² (kgf)	OIL VOLUME CLAMP (cc)	OIL VOLUME DE-CLAMP (cc)	WEIGHT (kg)	STANDARD PART No's	
							SINGLE ACTING	DOUBLE ACTING
4	40	15	1750	13	19	1.5	4311-411	4311-421
5	50	15	2900	22	30	2.5	4311-511	4311-521
6	63	15	4600	35	47	3.5	4311-611	4311-621