



# Hydraulic Work Support

Pneumatic Forwarding / Spring Forwarding



**Description**

- Hydraulic Work Supports are a replacement to the adjustable screw jack. This is not a force giving element but a resistance giving element.

**Features**

- Max. working pressure : 250 kg/cm<sup>2</sup>

**Application**

- Hydraulic work supports are used to provide a self-adjusting rest for the workpiece, ensuring matching operations. They compensate for work piece surface irregularities & prevent deflection and vibration under matching loads.

**Types**

**Spring forwarding work support**

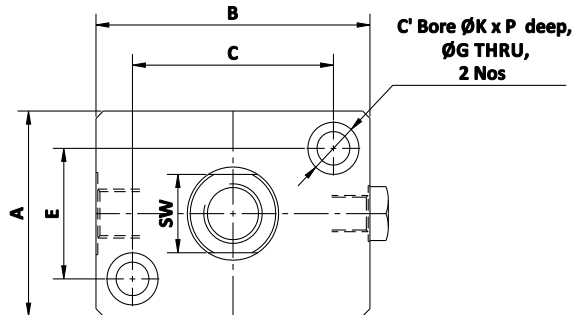
- The plunger in this type of work support is normally in the extended position due to the spring force. The plunger gets pressed either by the weight of a component or by hydraulic pressure, thereby locking it. The spring force can be adjusted with the help of a screw.

**Pneumatic forwarding work support**

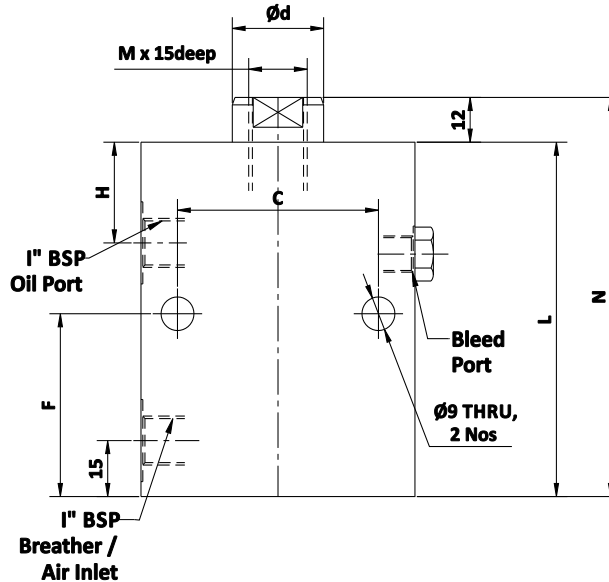
- The plunger in this type of work support is normally in the retracted position due to the spring force. After applying Pneumatic pressure, the plunger moves forward to touch the component. Pneumatic pressure is regulated to control the plunger forwarding force. Hydraulic pressure is applied to lock the plunger.

**Important Notes**

- Breather should be protected from cutting liquids and coolants.
- For seal kits, add prefix SK to part no.



DIMENSIONAL DETAILS		
SIZE	3	4
A	55	75
B	75	100
C	55	75
D	25	40
E	35	45
F	49	54
G	10	13.5
H	27	32
I	1/4"	1/4"
M	M16	M20
K	14	19
L	95	105
P	10	14
SW	21	36
N	107	117



- All dimensions are in mm
- Overall dimensional tolerance ±0.5 mm

SPECIFICATIONS							
SIZE	STROKE (mm)	SUPPORT FORCE at 150 kg/cm <sup>2</sup> (kgf)	WEIGHT (kg)	STANDARD PART No's			
				PNEUMATIC FORWARDING		SPRING FORWARDING	
				Max. PLUNGER FORCE (kgs)	PART No.	Max. PLUNGER FORCE (kgs)	PART No.
3	15	500	3	10	4510-311	8	4510-321
4	15	1000	6	25	4510-411	8	4510-421