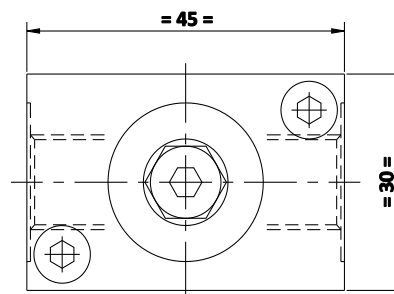




Hydraulic Sequence Valves



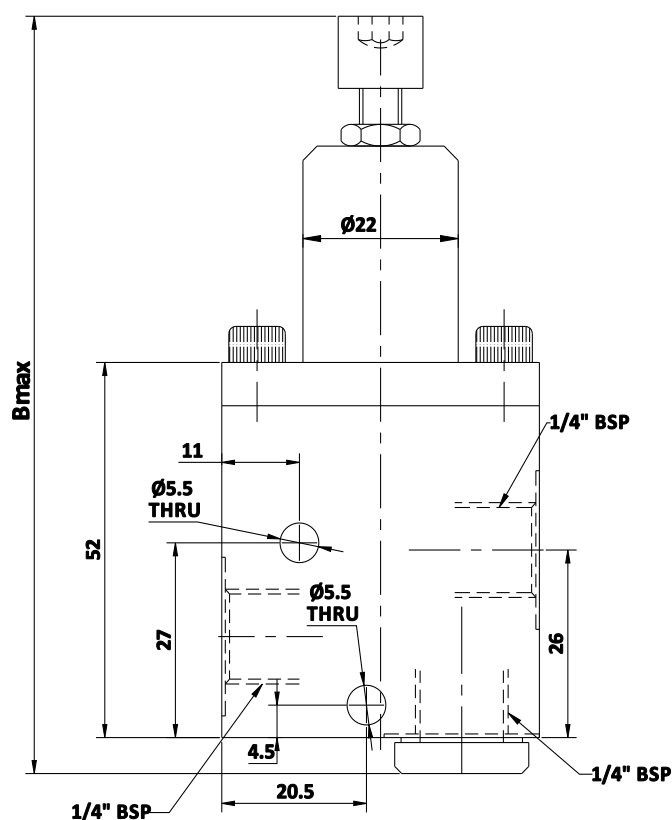
Description

- Sequence valves are used in power work holding circuits for pressure dependent sequence control.

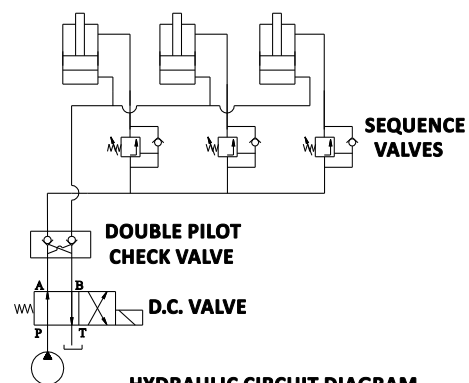
Features

- Min. working pressure : 10 kg/cm²
- Max. working pressure : 210 kg/cm²
- Pressure Adjustment range from 20 kg/cm²
- Compact size allows direct mounting onto the clamping fixture.
- Requires only one pressure line from power unit to the fixture for single acting cylinders.

- All dimensions are in mm
- Overall dimensional tolerance ± 0.5 mm



DOUBLE ACTING SWING CYLINDERS



HYDRAULIC CIRCUIT DIAGRAM

SEQUENCE CONTROL FOR DOUBLE ACTING SWING CYLINDERS

SPECIFICATIONS					
SIZE	RANGE OF ADJUSTMENT kg/cm ²	PORT SIZE	A	B	STANDARD PART No's
1	20-150	1/4" BSP	28	105	5311-111
2	100-200	1/4" BSP	28	135	5311-112